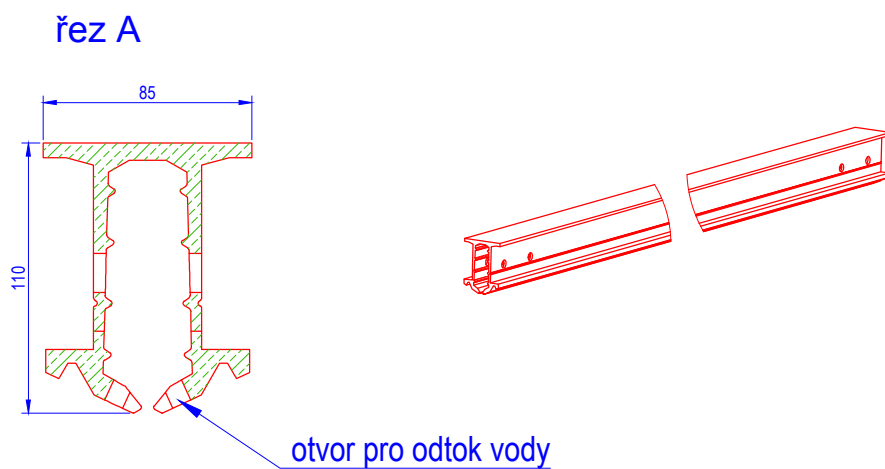
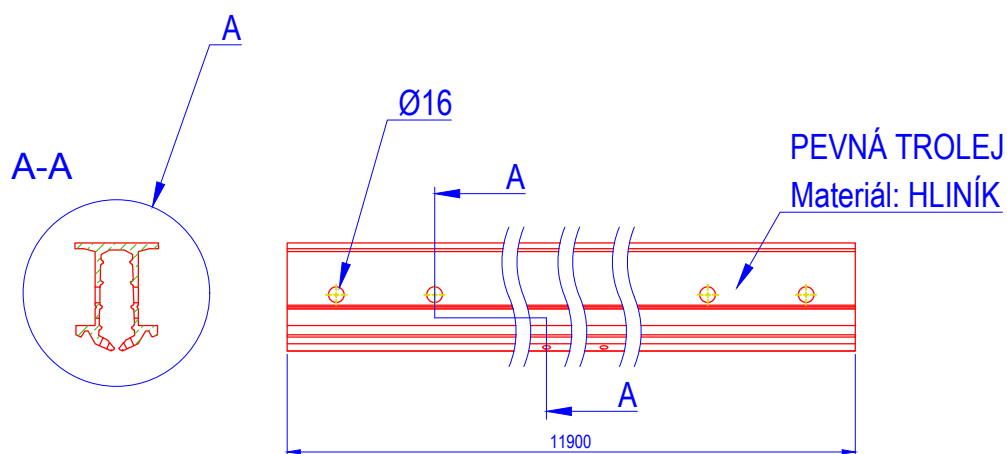


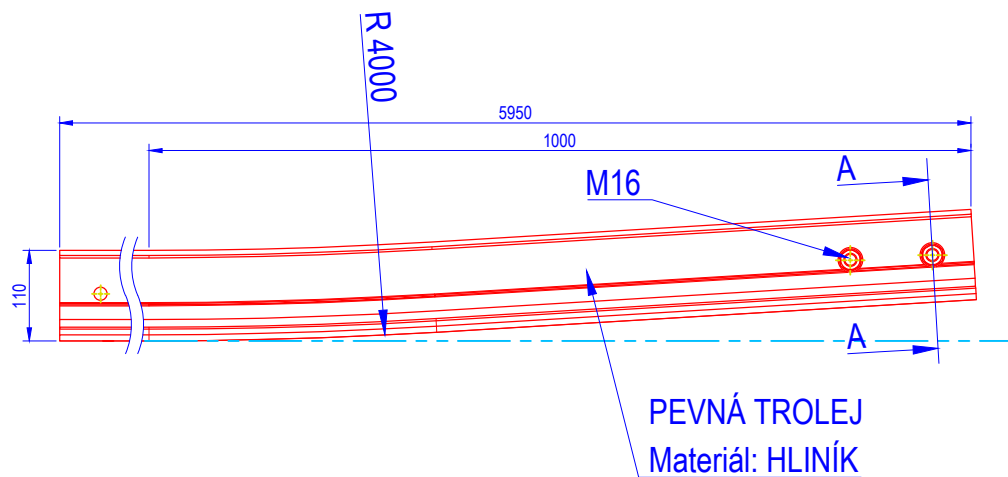
PEVNÁ TROLEJ: PROFIL



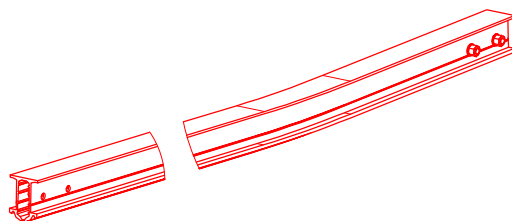
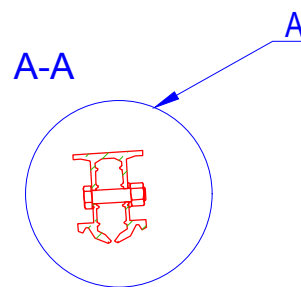
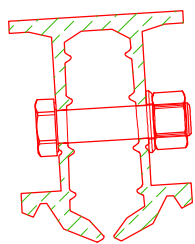
Poznámky:

1. Řez profilem pevné troleje představuje ekvivalent trolejového vedení o průřezu 1317 mm^2 .
2. Při poloměru ohybu menším než 30m musí být profil ohýbán při výrobě.

PEVNÁ TROLEJ: KONCOVÝ DÍL



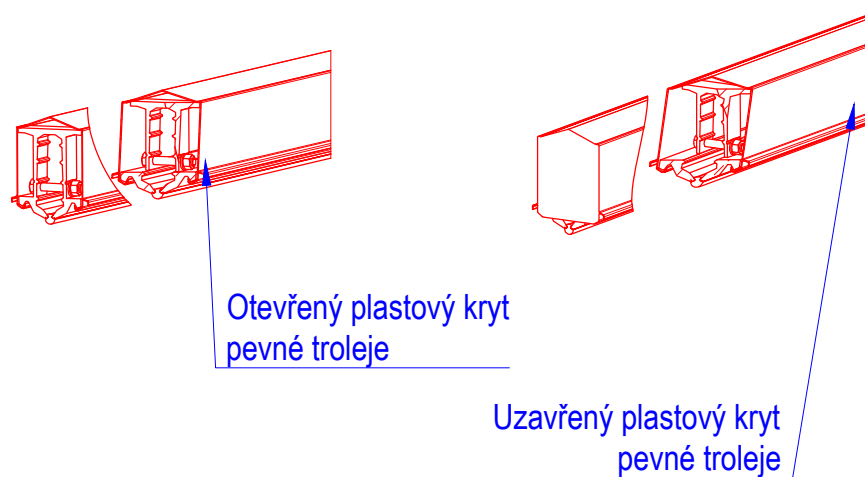
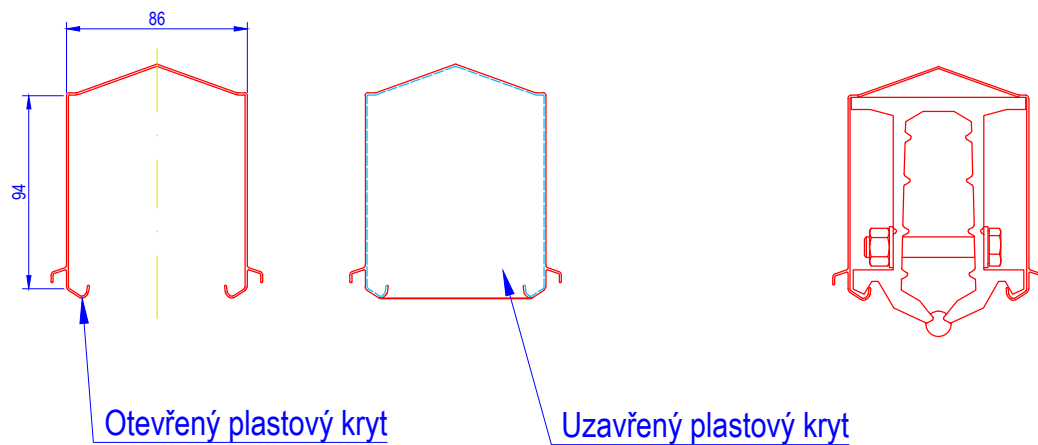
řez A



Poznámky:

1. Využívá se nad výhybkami a v přechodových částech

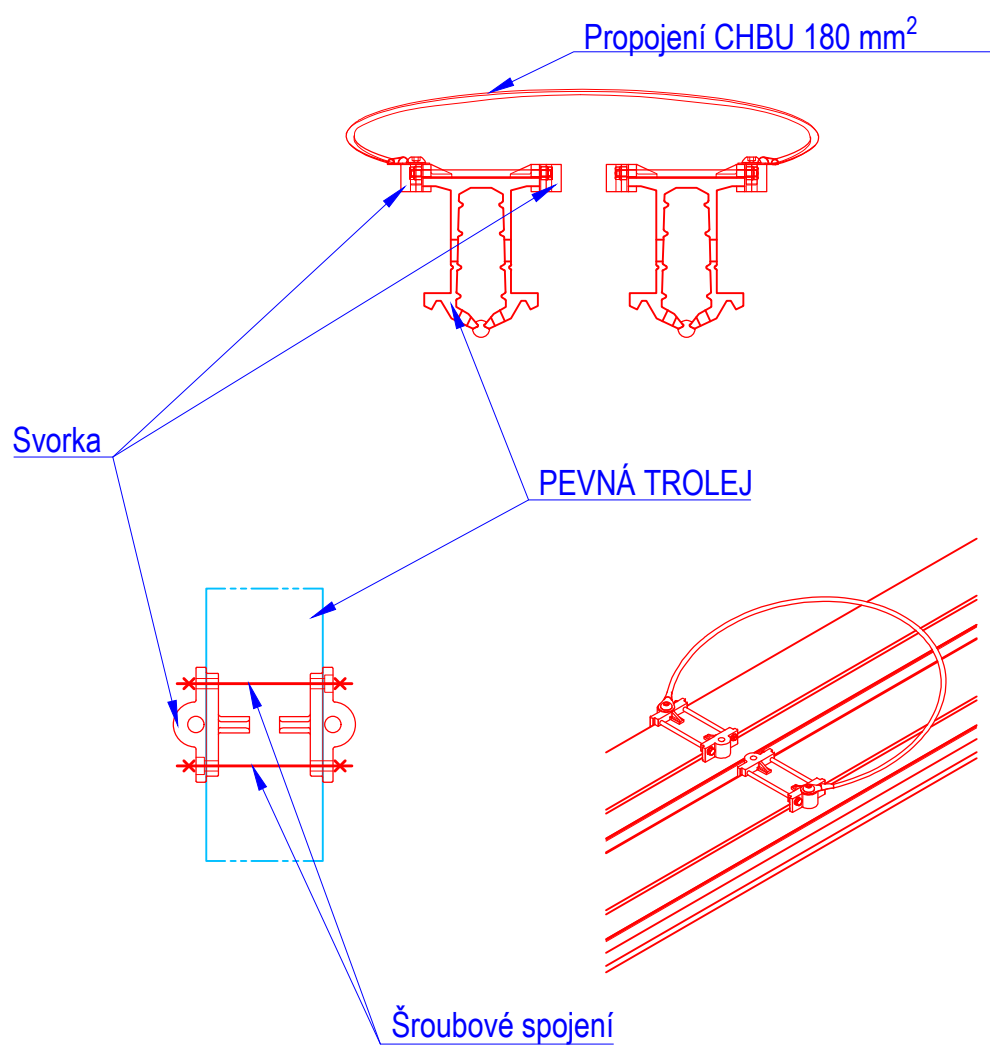
PROFILOVÝ KRYT



Poznámka:

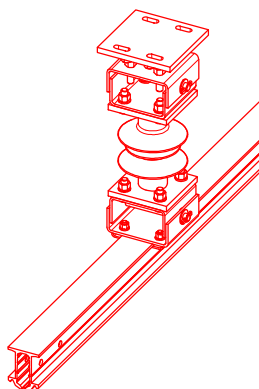
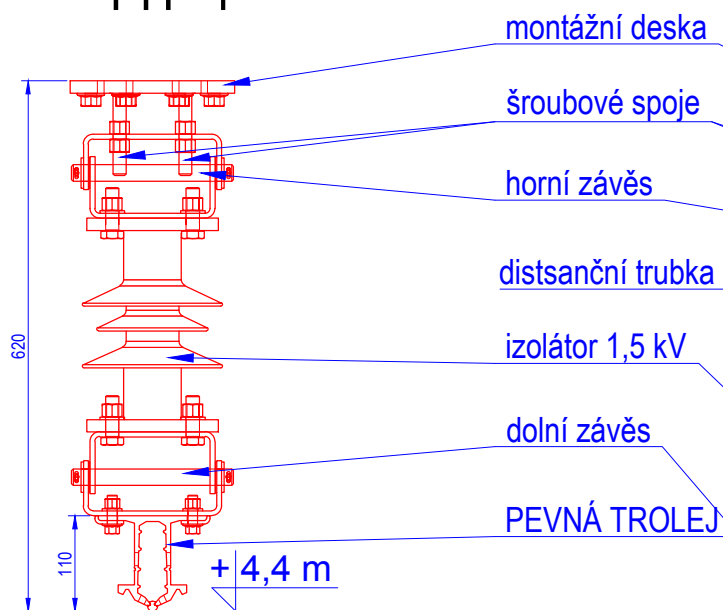
Použití na místech vystavených vlhkosti (mimo haly).

PŘÍČNÉ PROPOJENÍ

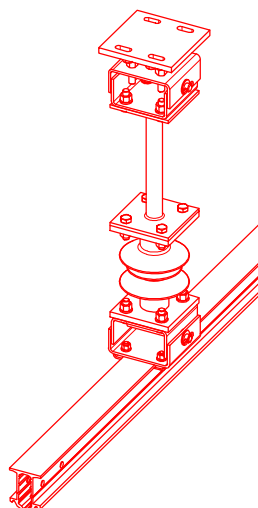
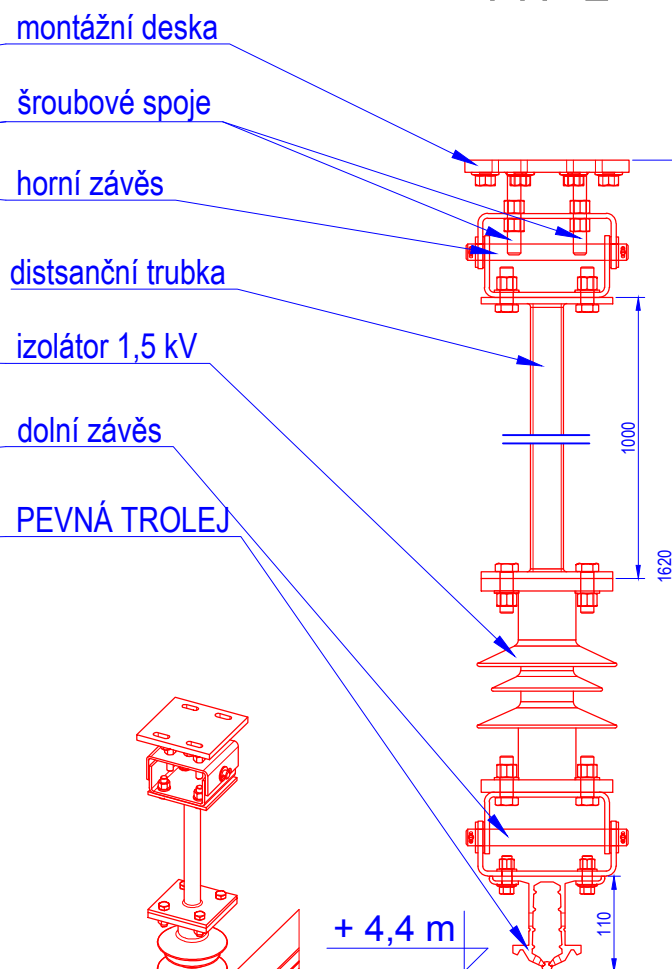


SVISLÉ ZAVĚŠENÍ

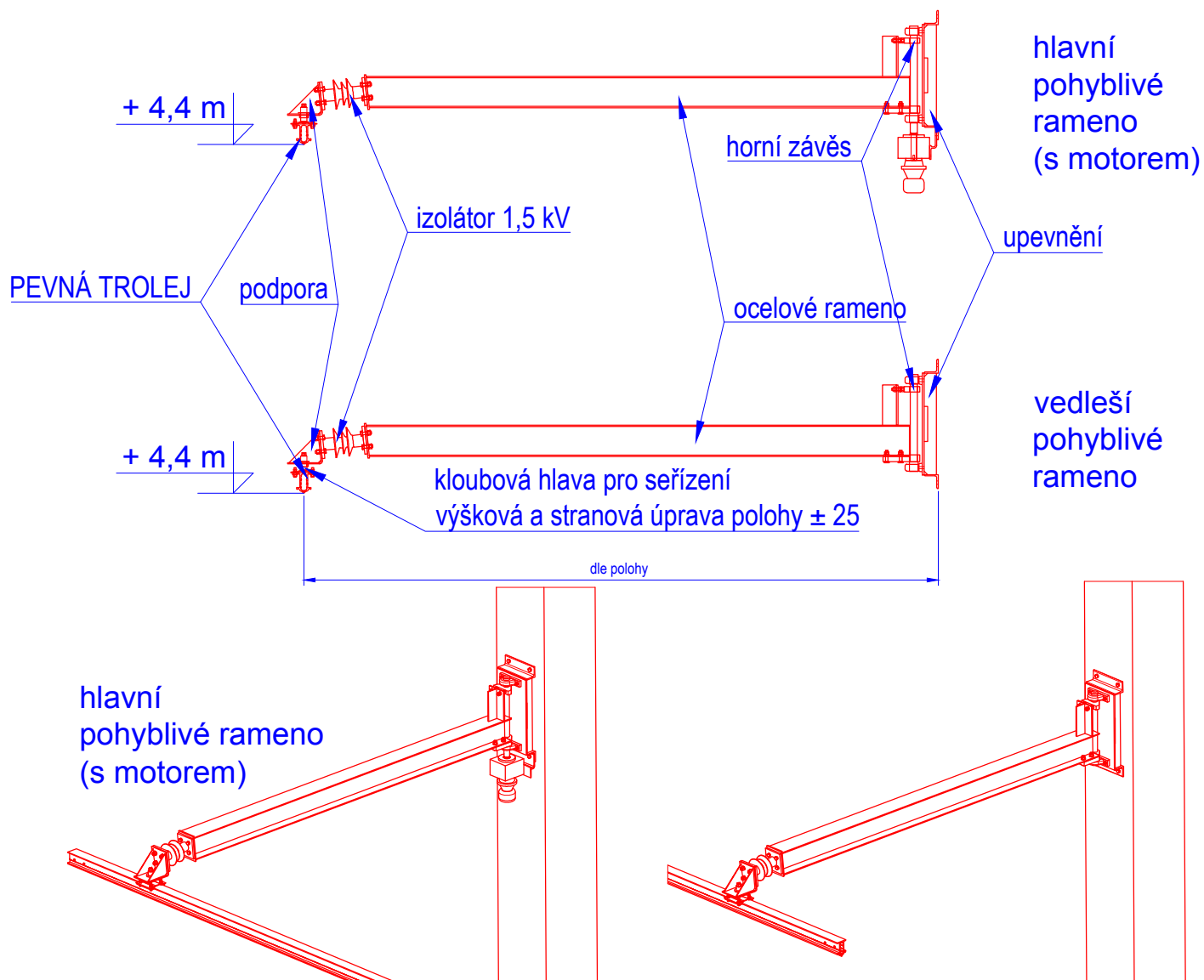
TYP 1



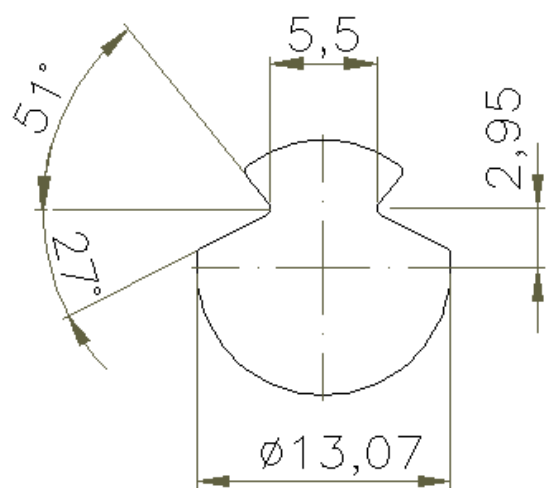
TYP 2



RAMENO



Drát trolejový Cu 120 mm²



ROZMĚRY

NÁHLED

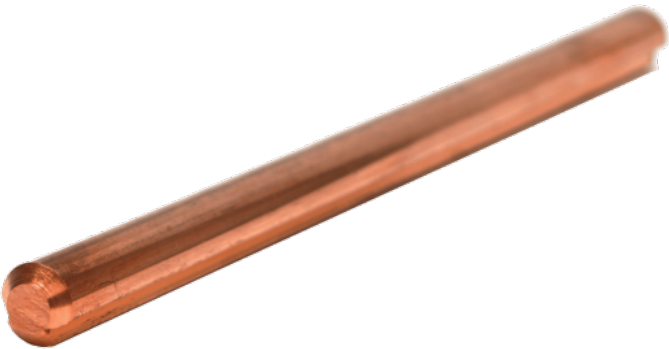
Hmotnost: /kus

ČÁST

POUŽITÝ MATERIÁL

Trolej

Cu-ETP/EN 1652/



* obrázek je pouze ilustrační

DALŠÍ INFORMACE

NÁZEV

HODNOTA

POPIS

Profil průřezu troleje

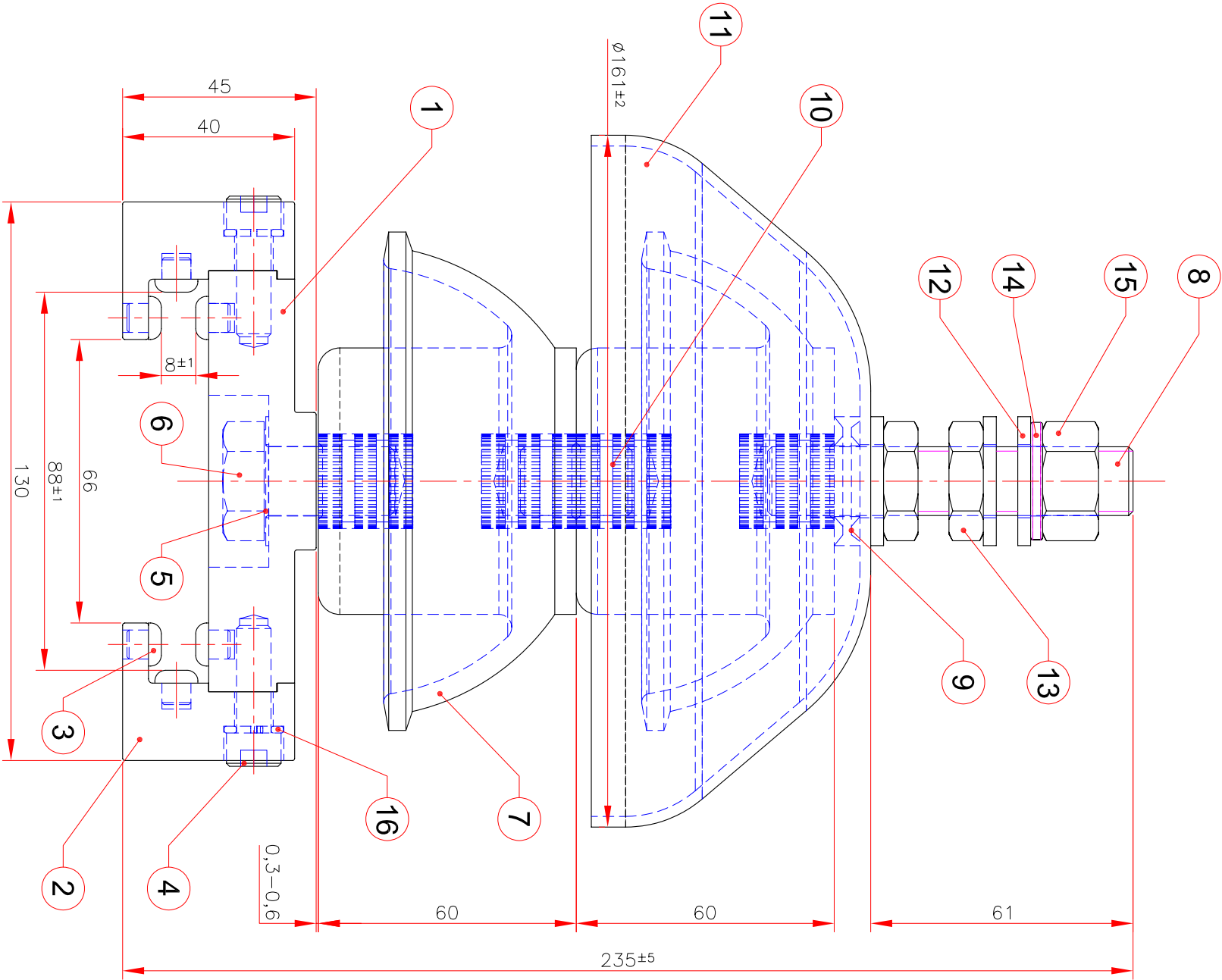
according to EN 50149

Síla při přetržení

44,0 kN



POZNÁMKY

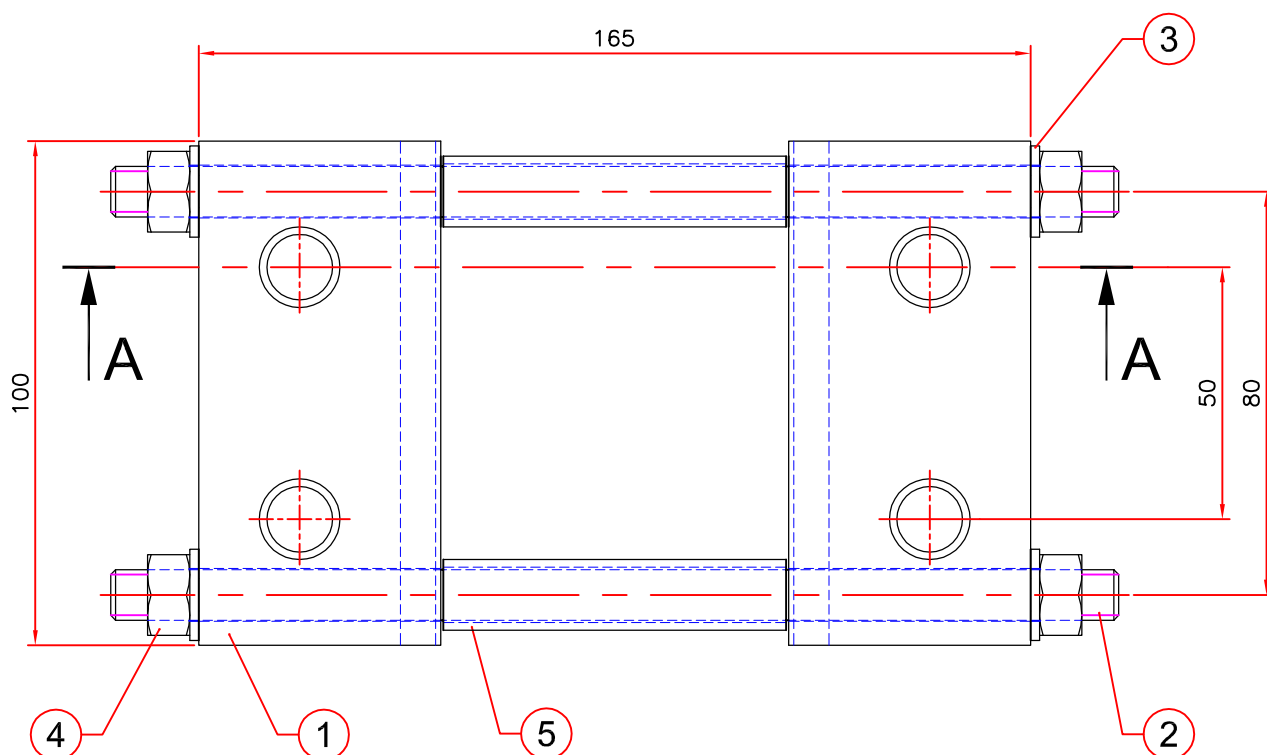
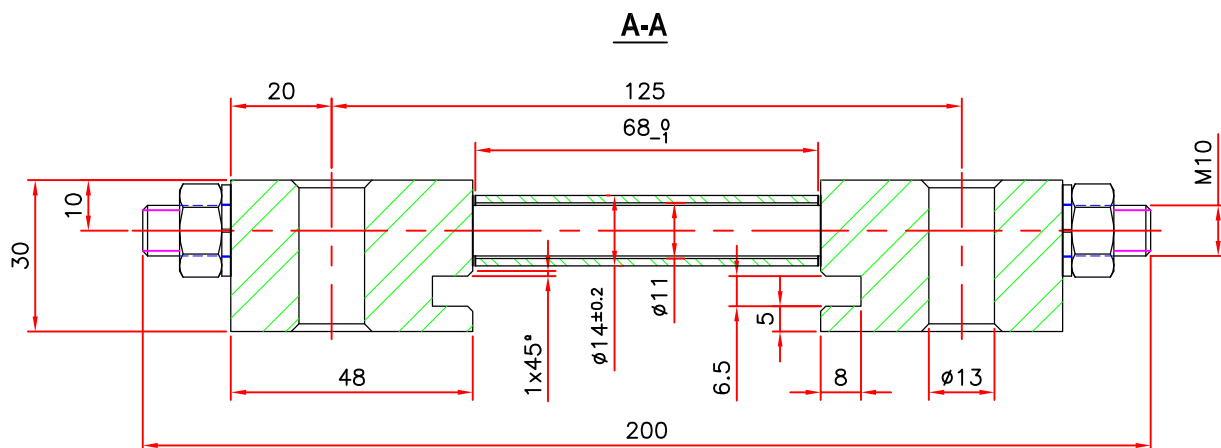
Necessary to verify price
Cenu je potřeba prověřit



NOMINAL TENSION.....1,5kV
WET INDUSTRIAL FREQUENCY VOLTAGE TEST.....30kV
FIRST SPARKOVER VOLTAGE.....54,02KV
DRY LIGHTNING IMPULSE WITHSTAND VOLTAGE TEST.....128KV
CREEPAGE DISTANCE.....350mm
ROUTINE TEST TENSILE LOAD.....17000daN

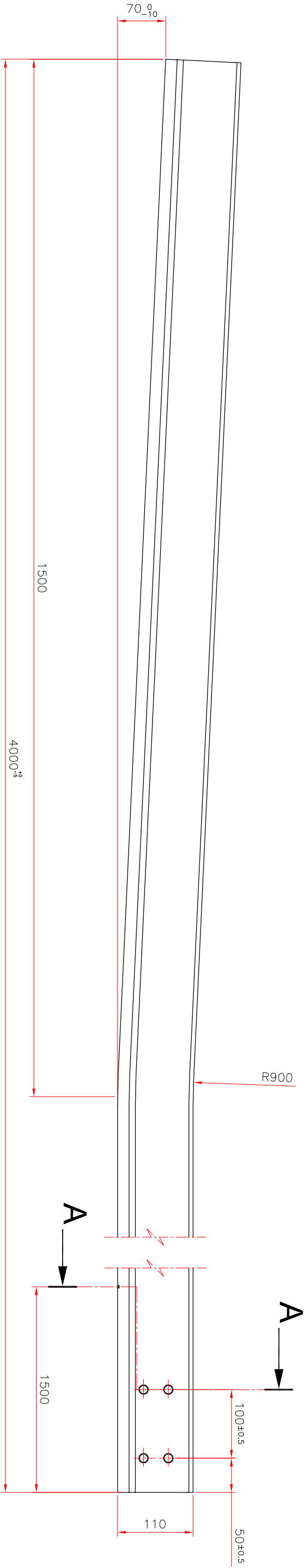
16	STANDARD	HELICAL SPRING LOCK WASHER W16 DIN127	4	4
15	STANDARD	HEX NUT M16 DIN934	1	1
14	STANDARD	HELICAL SPRING LOCK WASHER W16 DIN127	1	1
13	STANDARD	HEX THIN NUT M16 DIN936	2	2
12	STANDARD	WASHER W16 DIN125	3	3
11	CR/AISC-CP	—	1	1
10	STANDARD	THREADED ROD M16x25	1	1
9	STANDARD	DUBO WASHER M16	1	1
8	STANDARD	THREADED ROD M8x150	1	1
7	CR/AISC-00	—	2	2
6	STANDARD	HEXAGONAL CAP SCREW M16x30 DIN933	1	1
5	CR/AD	SLIDING WASHER	1	1
4	STANDARD	HEX SOCKET HEAD CAP SCREW M8x25 DIN912	4	4
3	CR/PIV-TFL	SLIDING PLUG	12	12
2	CR/GRIT2D-02	ANCHOR CLAMP CLIP MODEL 2 – SLIDING	2	2
1	CR/GRIT2D-01	ANCHOR CLAMP BODY MODEL 2 – SLIDING	1	1

SURFACE ROUGHNESS FOR EACH MACHINING					√ EXCEPT OTHER PRECISION ON DRAWING		BILL OF MATERIAL	
REPLACE:					—		Rev. of modification	
Tolerances					ISO 2768-m			
Material					—			
Surface Treatment					—			
Rev.	Date	Revisions		Visa				
Designation :								
DOUBLE INSULATED							Weight :	
SLIDING CLAMP T2							—	
Set :CR/AISDC-GRIT2D-T16x30-00					Scale :			
					3/4		06060	
							A3	

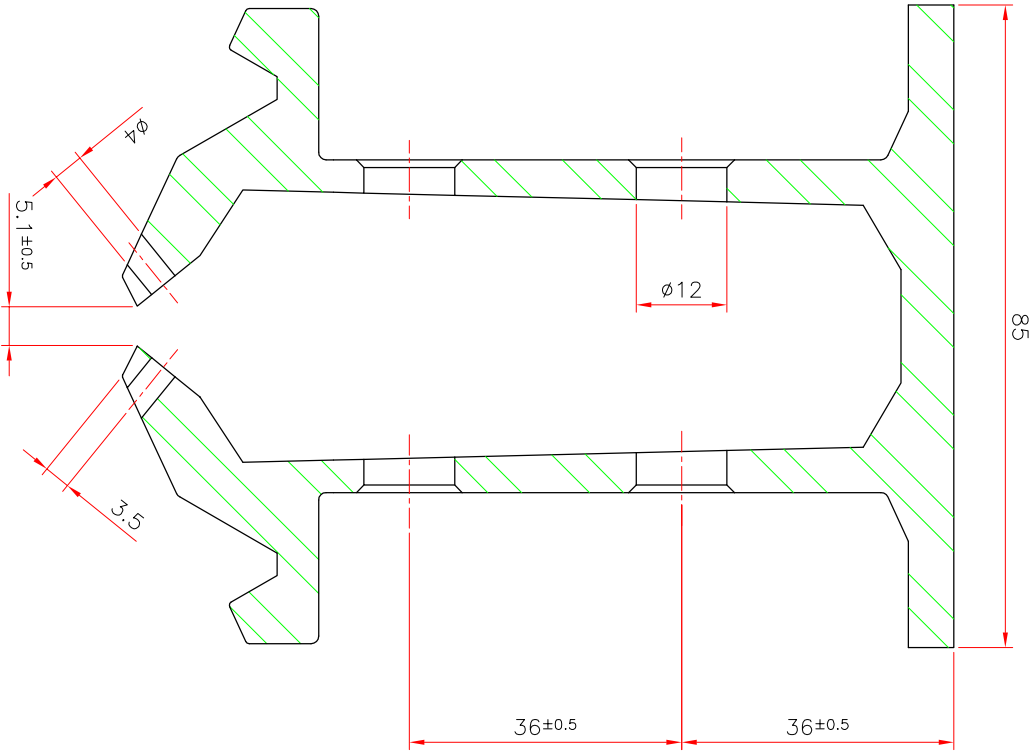


5	STANDARD	ENTRETOISE 14x1.5	AISI 304	2
4	STANDARD	ECROU HEXAGONALE USUEL M10 DIN934	AISI 304	4
3	STANDARD	RONDELLE ELASTIQUE W10 DIN127	AISI 304	4
2	STANDARD	TIGE FILETEE M10x200	AISI 304	2
1	CR/CONEX-D-01	BLOC D' ALUMINIUM	6082-T6	2
ITEM	DWG N°	DESIGNATION	MATERIEL	QTE.

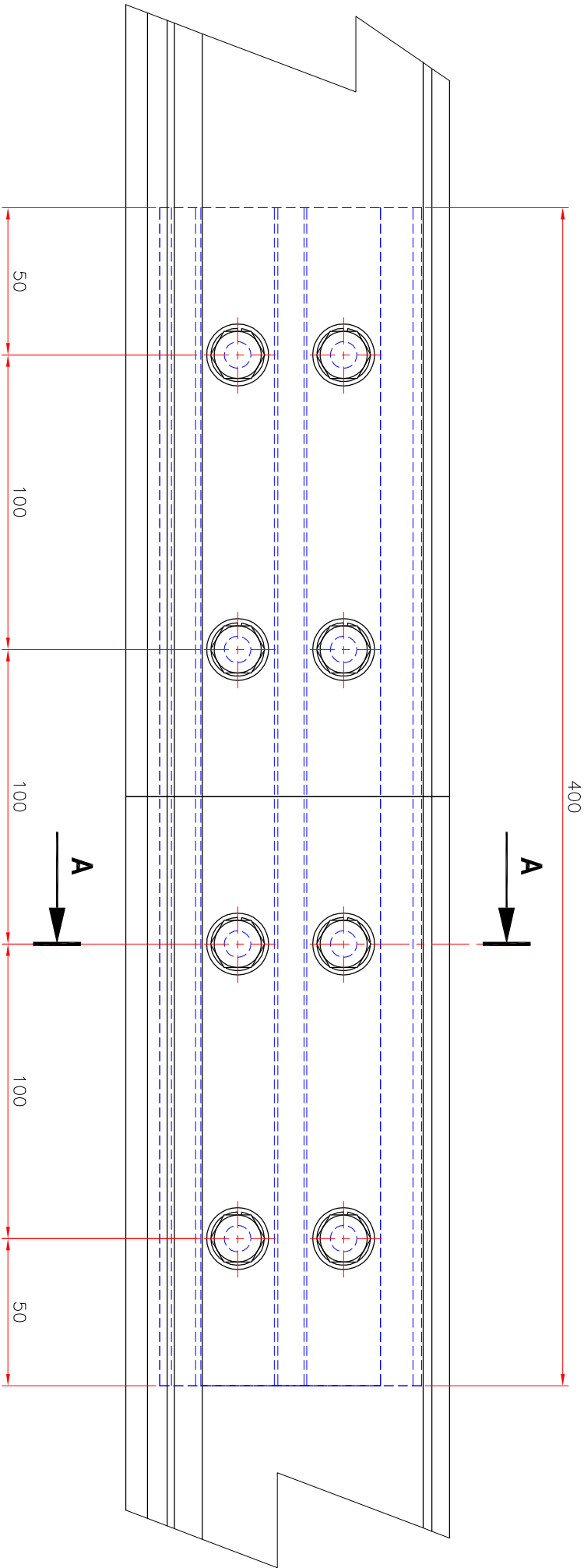
ETAT DE SURFACE POUR TOUS LES USINAGES ✓ SAUF INDICATION SUR PLAN				REPLACE: 556028	Indice de modification
-	-	-	-	Tolérances UNE-EN ISO2768-mk	
-	-	-	-	Matière -	
-	-	-	-	Traitement de Surface -	
Ind.	Date	Modifications	Visa.	Railtech-KLK	Poid : 0.93kg
Désignation : BRIDE DE CONNEXION				Dessiné le 24/01/07 par P.T	
Ensemble : CR/CONEX-D-00				Vérifié le 24/01/07 par F.G	A4
				Approuvé le 24/01/07 par V.P	
Echelle : 2/3				4667	



COUPE A
Ech 1:1

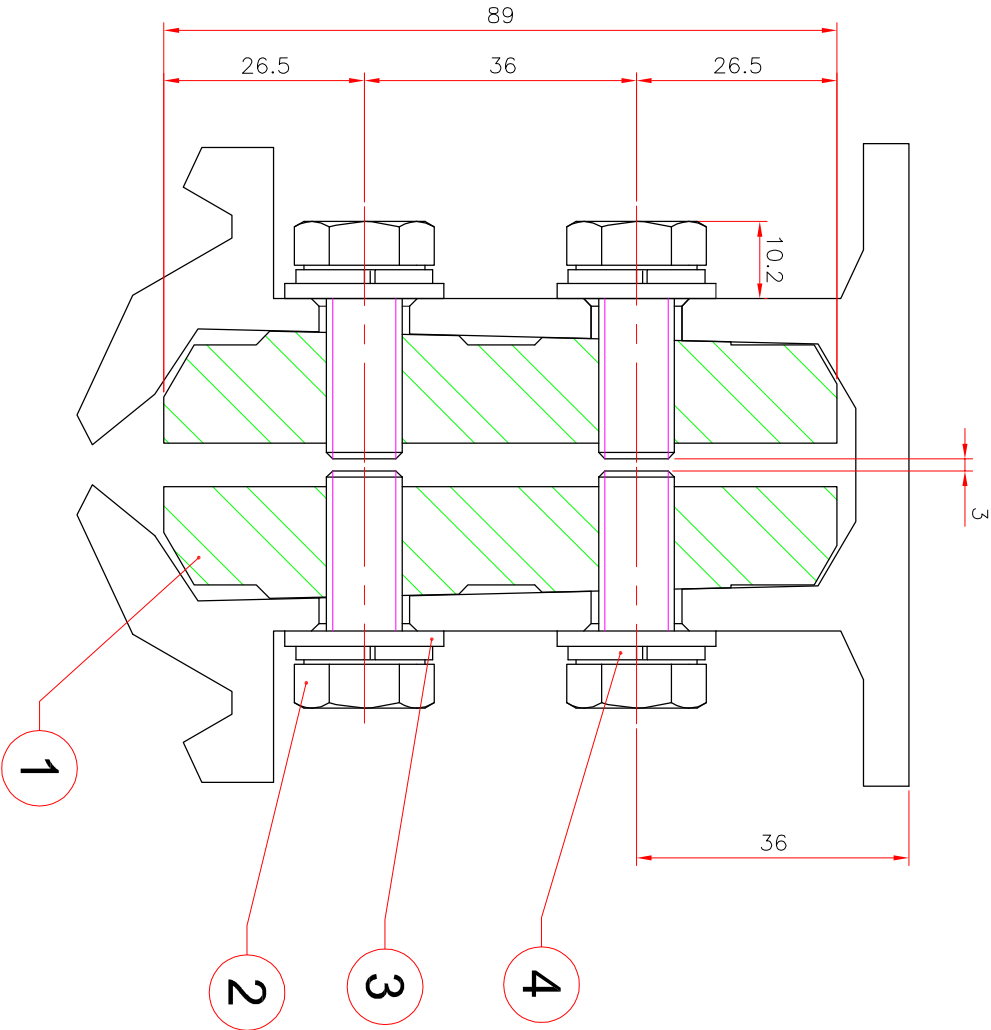




ETAT DE SURFACE POUR TOUS LES USINAGES ✓ SAUF INDICATION SUR PLAN				REMP LACE:		Indice de modification
				556021		
				UNE-EN ISO2768-mK		
				6106-T5		
Ind.	Date	Modifications	Visa	Traitement de Surface		
Designation : BARRE RAMPE				Dessiné le 02.11.07	par F.G	Poid
PAC 110				Vérifié le 02.11.07	par P.T	
Ensemble : CR/PER-RP-00				Approuvé le 02.11.07	par V.P	



COUPE A-A

Ech.: 1/1



4	STANDARD	RONDELLE ELASTIQUE W10 DIN127	Acier INOX 304	16
3	STANDARD	RONDELLE M10 DIN125	Acier INOX 304	16
2	STANDARD	VIS TETE HEXAGONALE M10x25 DIN933	Acier INOX 304	16
1	CR/PLU-01	ECLISSES	6106 T5 ou 6060 T6	2
REP	N°	DESIGNATION		QTE.
ETAT DE SURFACE POUR TOUTS LES USINAGES ✓ SAUF INDICATION SUR PLAN				
		REMP LACE:	556004	Indice de modification
		Tolérances	UNE-EN ISO2768mK	
		Matière	6106-T5	
		Traitement de Surface		
Ind.	Date	Modifications	Visa	
Designation :				
ENSEMBLE DES ECLISSES				
Ensemble : CR/PLU-00		Echelle : 1:2		Poid 3,1Kg
		Dessiné le	19.02.07	F.G
		Vérifié le	19.02.07	P.T
		Approuvé le	19.02.07	V.P
		4626		A3

1500 V Section insulator

